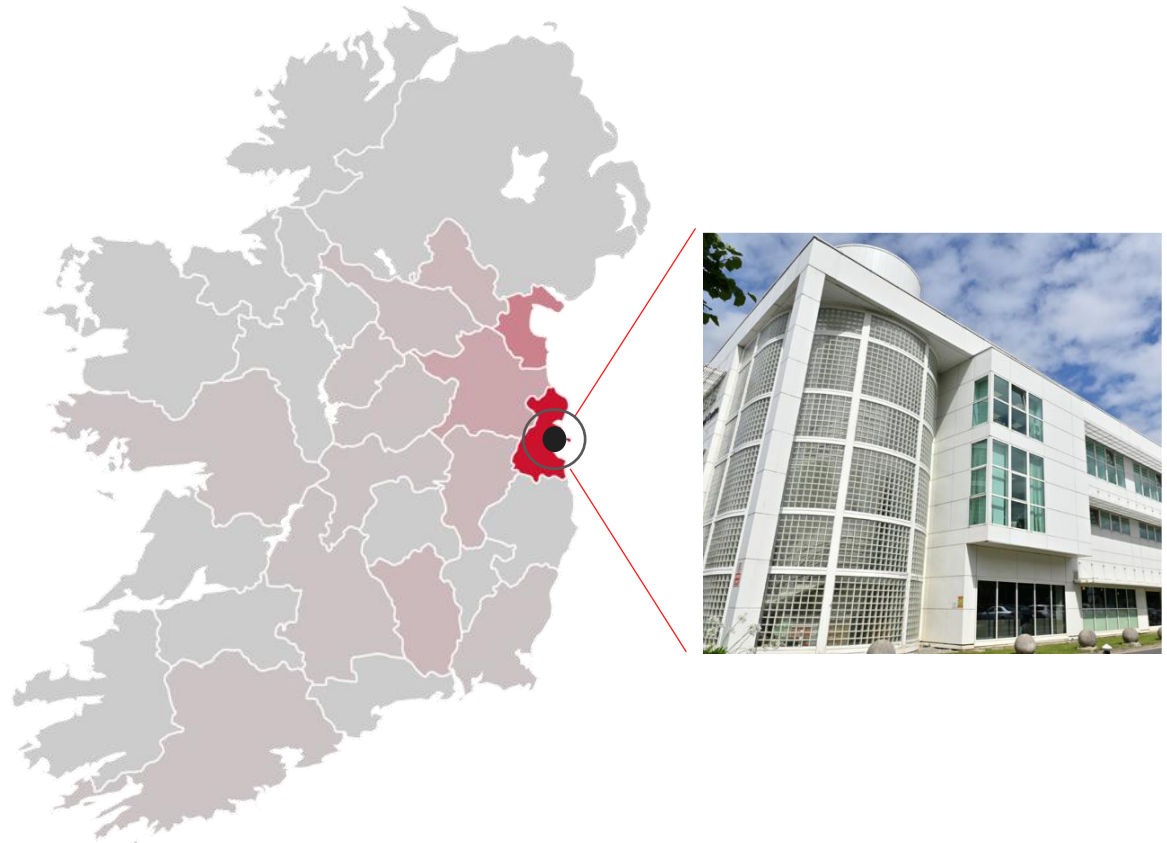




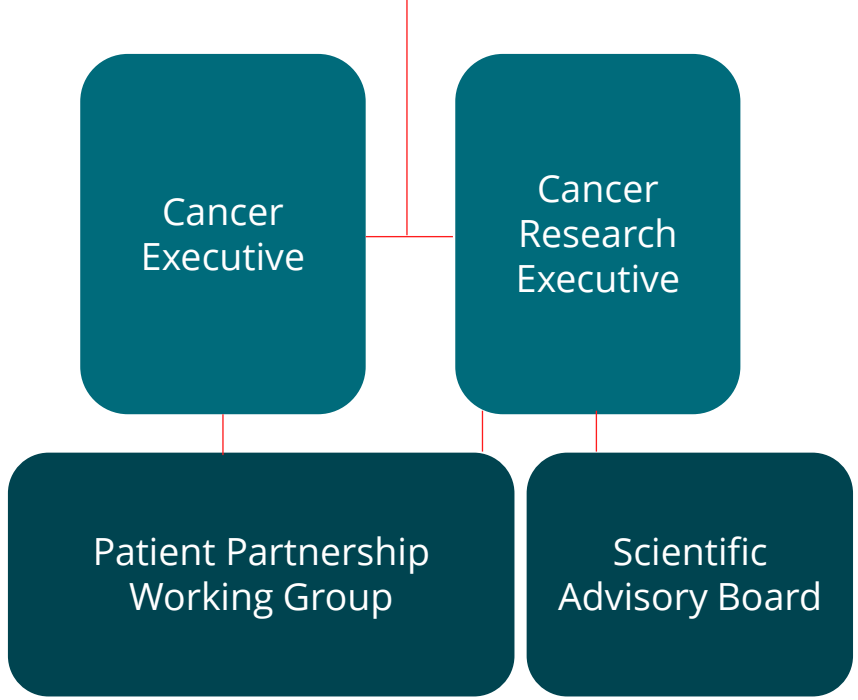
How the accreditation process helps us improve

Professor Leonie Young
Scientific Director
Beaumont RCSI Cancer Centre





Beaumont RCSI Cancer Centre Board



Our Journey



How has the OECl accreditation process helped us to improve as a Cancer Centre?

A word cloud centered around the words "cancer" and "patient". The words are arranged in a circular pattern around these two central terms. The words are in various shades of teal and blue, with some appearing in a lighter, semi-transparent font. The background is a light blue gradient.

cancer **patient**

Cancer Directorate
cancer research
cancer care
cancer services better
way for all patients
patient partnership
cancer centre
cancer specialities

cancer reaearch
patients pathway
patient outcomes
timeframes for patients
focus set of targets
practices
quality improvement
importance of cancer

A Framework for Cancer Quality



Clear direction

- *“It has given us **DIRECTION** and a clearly defined set of targets to achieve making it easier to compare our service with other institutions”*



Culture of Continuous Improvement

- *“The process didn't stop once we were accredited it actually gathered momentum”*

- *“it doesn't feel like a tick box exercise....we are actually changing processes as we go....”*



Collective effort
& shared vision
locally & nationally

- *“.....providing focus and direction enabling **COLLABORATIVE QUALITY IMPROVEMENTS** quality improvement across the cancer centre”*



Recognise our great work

- *“It shines a light on the great work we do in Beaumont RCSI Cancer Centre in a formal way.... ”*

- *“...we are all working toward a **COMMON GOAL** and we have a shared vision in the strategy”*

- ***“Has ESTABLISHED OUR REPUTATION as leaders in quality cancer care”***

Presenter Name
Title, Department





Patient Partnership

- Moving from patient centred to patient partnered
- Putting patients at the highest level of governance in our Cancer Centre
- Developing our centre with patients



“Structure, standardised practice and most importantly the patient partnership...I think having patients involved at multiple levels including the Board and the partnership group is very powerful”

Presenter Name
Title, Department





Clinical Care





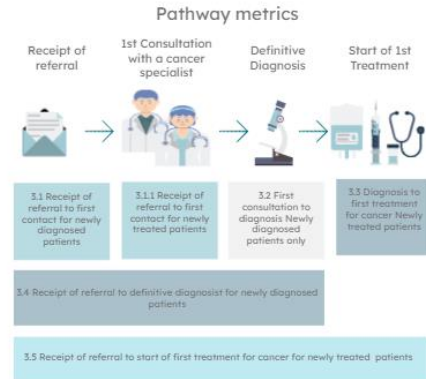
Cancer Data

- Expanding our cancer data base
- Live real-time dashboard with newly diagnosed and treated patient data
- Facilitates continuous oversight and service planning



Multidisciplinary Structure

- Standardised Multidisciplinary Meetings
- Established annual audit cycle
- Greater engagement & involvement of MDM Chairs with defined roles and responsibilities



Clinical Pathways

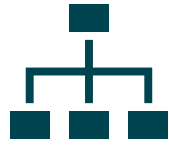
- Collective process of coming together to document and formalise our pathways
- 2 consecutive years of patient pathway measurement for every newly diagnosed and newly treated patient



Research

Strategic Advice and Performance Monitoring

BEAUMONT RCSI CANCER CENTRE



Research Governance
& Advice

Scientific
Advisory Board



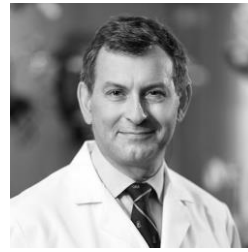
Felix Feng
(Chair), UCSF



Asma Nusrat,
University of
Michigan



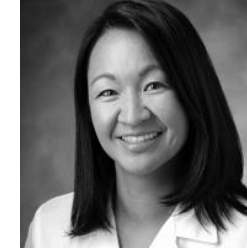
Geoffery Greene
University Chicago



Alistar Thompson
BCM



Linda Sharp
Newcastle University



Joesphine Feliciano
Johns Hopkins



Diether Lambrechts
University Leuven



Beaumont RCSI Cancer Centre Research Executive



Cancer Patient
Partnership
Working Group



Presenter Name
Title, Department

BEAUMONT RCSI CANCER CENTRE



Research Programmes

BEAUMONT RCSI CANCER CENTRE



Structured
Research Groups
and
multidisciplinary
research

Breast Cancer



Damir Varešlija Patrick Morris

Colorectal Cancer



Annette Byrne John Burke Adrian Murphy

Gynaecological Cancer



Tracy Robson Bryan Hennessy

Haematological Cancer



Triona NiChonghalie Siobhan Glavey

Head & Neck Cancer



Robbie Woods

Lung Cancer



Jarushka Naidoo Catriona Dowling

Neuro-Oncology



Brona Murphy Stephen McNally Jochen Prehn

Skin Cancers



Fiachra Martin

Upper GI Cancer



Will Rob

Urological Cancer



Iain Davis Brian O'Neill

Endocrine & Pan Cancers Endocrine/Pan Cancers & Epidemiology/Public



Marie McIlroy Kathleen Bennett Patrick Redmond Michael O'Reilly

BEAUMONT RCSI CANCER CENTRE

Presenter Name
Title, Department



Translational Trial Activity

BEAUMONT RCSI CANCER CENTRE



TRANSLATIONAL
CLINICAL TRIALS

Current translational research studies in Beaumont RCSI Cancer Centre

Central Nervous System (Biomarkers in Glioma) TRIAL-IE 08-13

Gastrointestinal (COLOSSUS TRIAL-IE 17-26),

Breast/cervical (PUMA-NER-9501)

Breast (Proteomics and Molecular Heterogeneity TRIAL-IE 09-07)

All studies are sponsored by the National Cancer Clinical Trials Network, Cancer Trials Ireland. There are currently 4,600 patients on translational research studies in the Cancer Centre.

Cancer translational trial material is now in the process of achieving ISO accreditation (ISO 20387). Accreditation is an internationally recognised system confirming compliance to strict international standards. Beaumont RCSI Cancer Centre translational trials unit is the first national biobank to undergo this accreditation process.

Presenter Name
Title, Department

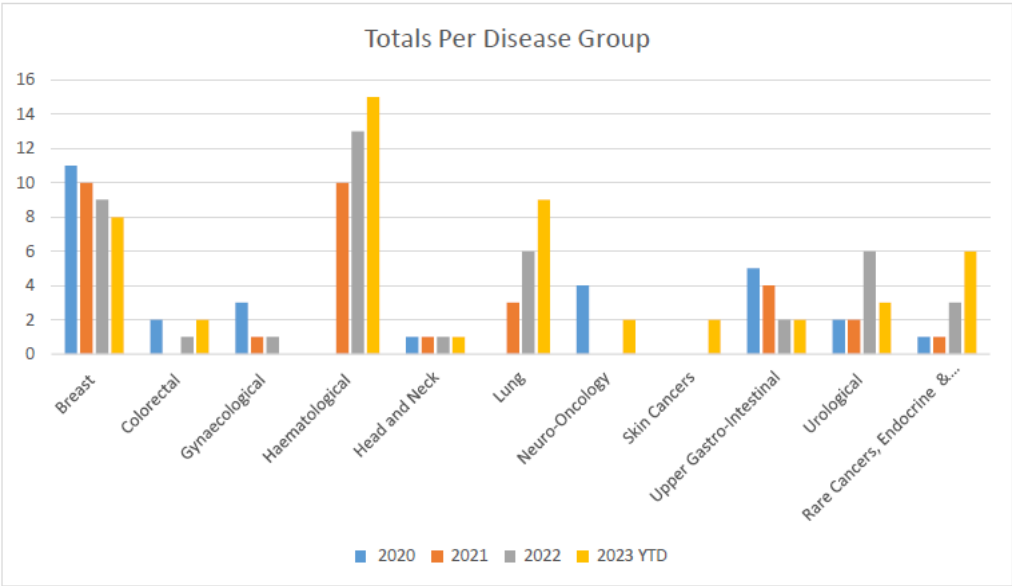
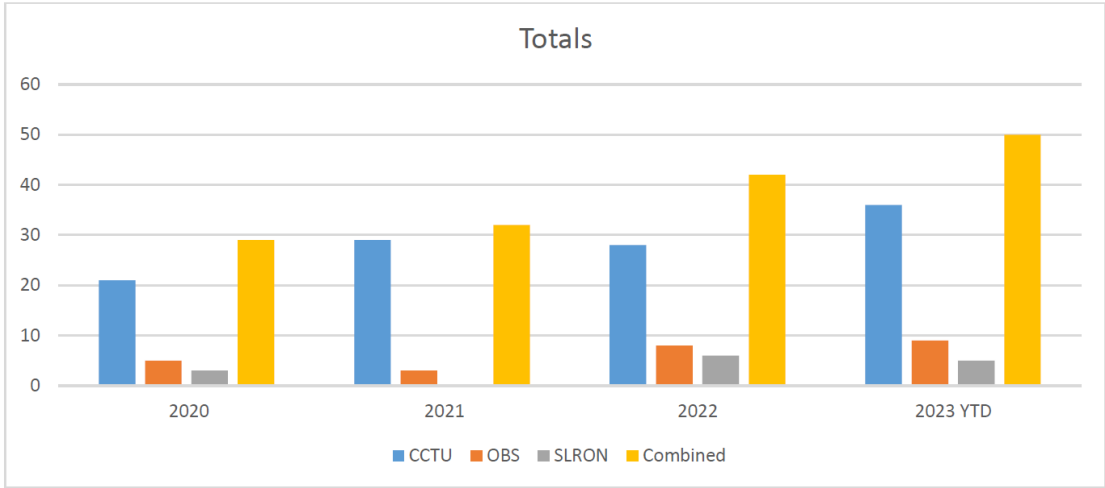


Clinical Trial Activity

BEAUMONT RCSI CANCER CENTRE



Numbers of Clinical Trials Open for Accrual in Beaumont RCSI Cancer Centre



BEAUMONT RCSI CANCER CENTRE

Presenter Name
Title, Department



Health Research Board Cancer Trials Ireland;
National Cancer Clinical Trials Network - Royal
College of Surgeons in Ireland.. Award to
Cancer Centre: €7M; 2021



Health Research Board RCSI Cancer Trials
Group. Award to Cancer Centre: €2.5M, 2021



Irish Cancer Society. Lung Health Check €5M,
2024



Science Foundation Ireland Strategic
Partnership Programme. Multi-omic
Longitudinal Mapping of Breast Cancer Brain
Metastasis €5.2M, 2024



Science Foundation Ireland ARC for
Therapeutics €25M, 2024



Next Steps

BEAUMONT RCSI CANCER CENTRE



Remain patient partnered in all clinical, educational and research activities

Focus multidisciplinary research on core and emerging areas of strength

Diversify clinical research portfolio – beyond pharmacological intervention to early detection/non-invasive monitoring, surgical and survivorship

Strengthen translational trial activity to drive innovation in investigator initiation clinical trials

Increase patient recruitment to clinical trials





BEAUMONT RCSI
CANCER CENTRE